



LOGISTICS POINTE BUILDING

**1663** **WATKINS ROAD**  
COLUMBUS, OHIO

*10,000 SF AVAILABLE*  
*[www.growincolumbus.com](http://www.growincolumbus.com)*



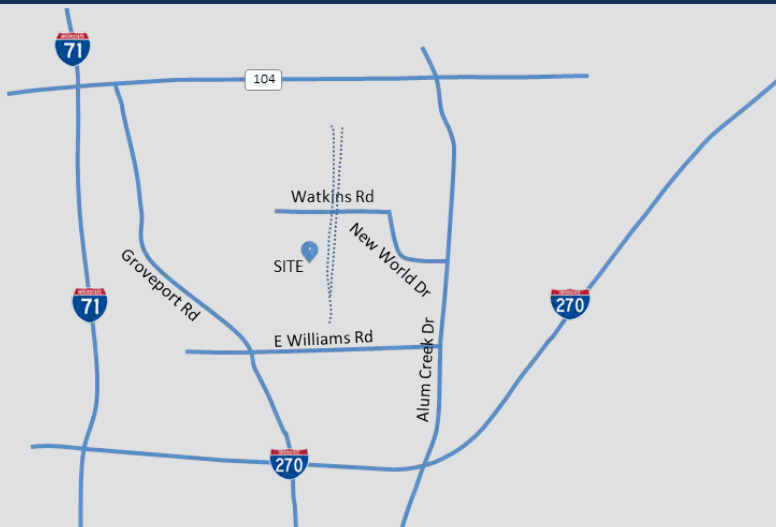
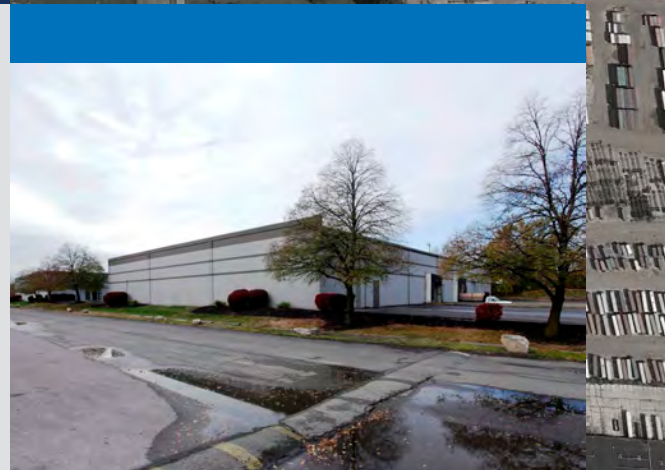
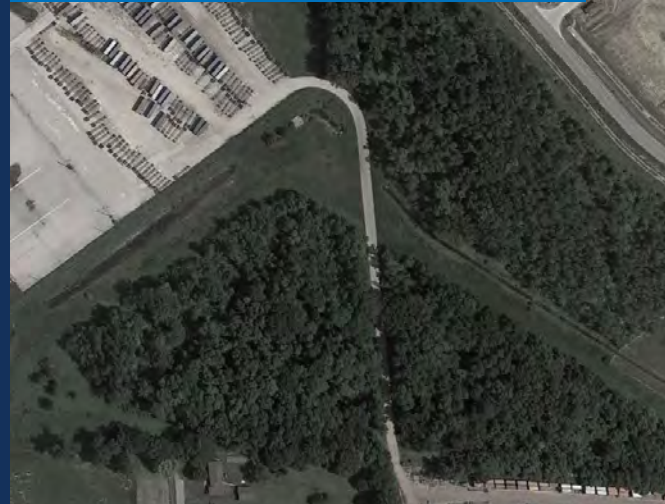
# GROW WITH LOGISTICS POINTE

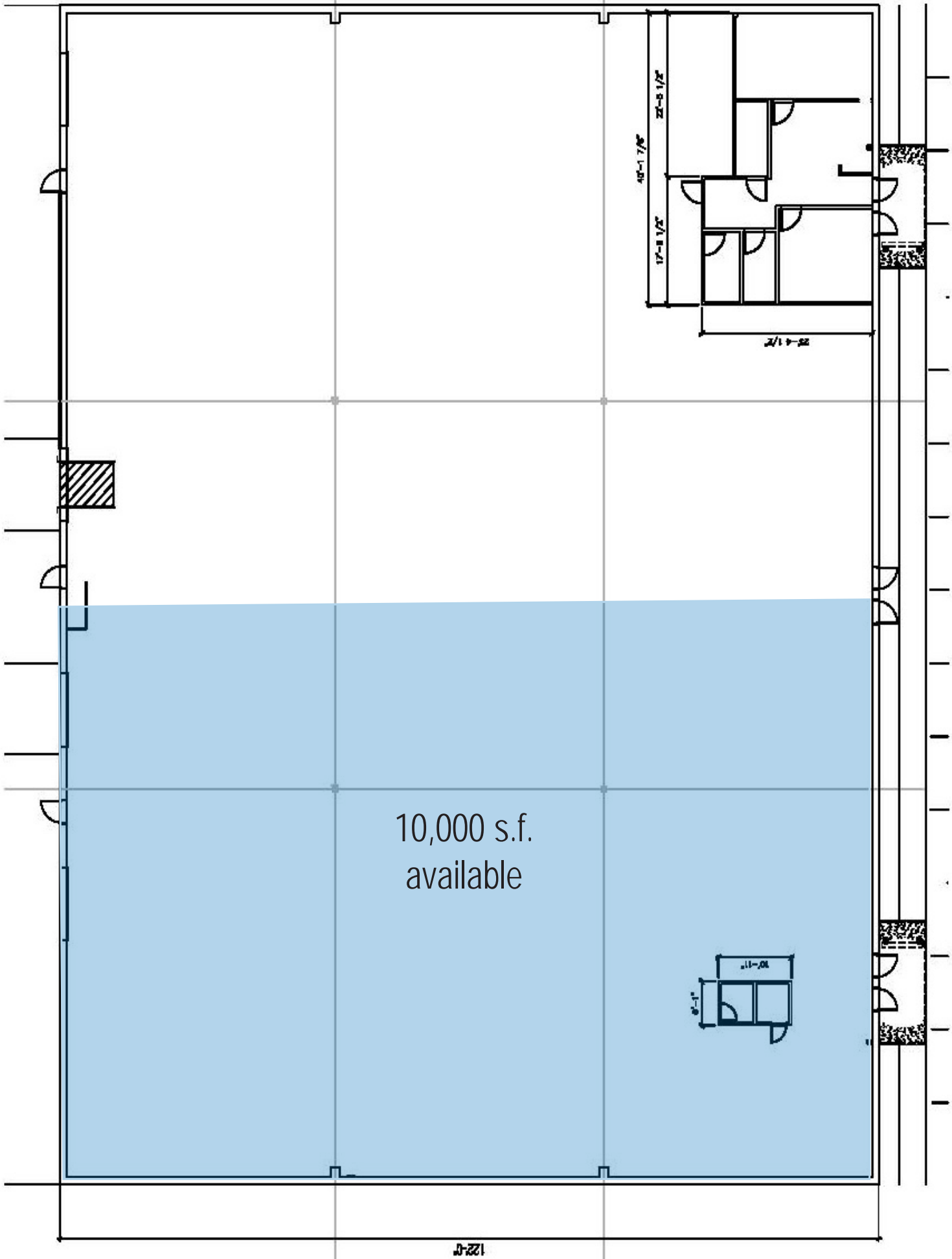
## INTRO

Logistics Pointe is a 1.1 million square foot, seven building industrial center located on the southeast side of Columbus, Ohio. It is located adjacent to the Norfolk Southern Discovery intermodal yard, and Rickenbacker air cargo airport. All buildings in Logistics Pointe were renovated, and available unit sizes range from 10,000 square feet to 700,000 square feet. Columbus is an ideal distribution location.

## BUILDING HIGHLIGHTS

Building Type:	Rear load
Total SF:	20,000 SF
Available SF:	10,000 SF
Ceiling Height:	18'
Column Spacing:	40'w X 40'd
Loading:	1 dock, 1 drive-in
Lighting:	Metal Halide
Other:	Warehouse, roof and deck painted white





10,000 s.f.  
available

122'-0"

48'-1 7/8"

22'-5 1/2"

17'-8 1/2"

22'-4 1/2"

10'-11"

8'-1"



Disclaimer: Although information has been obtained from sources deemed reliable, Owner, Jones Lang LaSalle, and/or their representatives, brokers or agents make no guarantees as to the accuracy of the information contained herein, and offer the Property without express or implied warranties of any kind. The Property may be withdrawn without notice. ©2014. Jones Lang LaSalle. All rights reserved.



## FOR MORE INFORMATION, PLEASE CONTACT:

**Dan Wendorf**  
Managing Director  
+1 614 460 4407  
dan.wendorf@am.jll.com

**Steve Kuhr**  
Executive Vice President  
+1 614 460 4409  
steve.kuhr@am.jll.com

[www.growincolumbus.com](http://www.growincolumbus.com)

65 E STATE STREET, SUITE 550 • COLUMBUS, OHIO 43215